

# DISTRICT SCALE, HIGH GRADE GOLD PROJECTS IN NEWFOUNDLAND



# EXPLOITS

DISCOVERY CORP

## Drill ready targets for spring/summer 2021.

### Little Joanna Prospect (Dog Bay)

- Visible gold discovered in outcrop, Nov 2020.
- Assays pending.
- Intersection of Dog Bay Line & secondary structures.

### Quinlan Vein Prospect

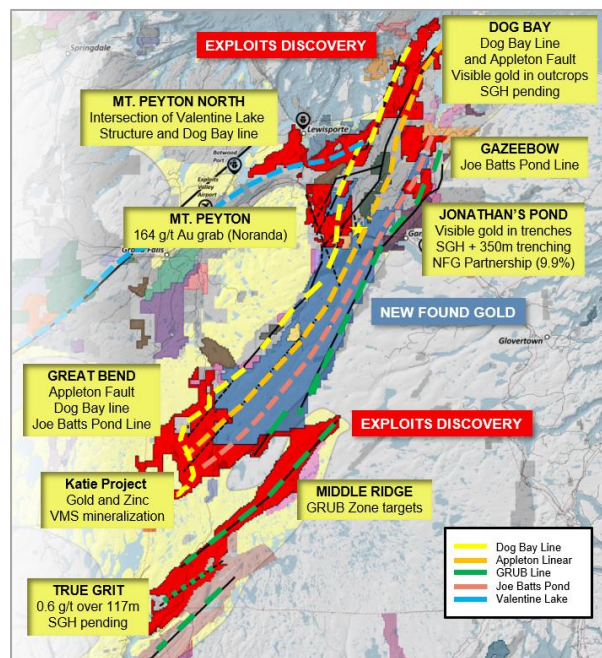
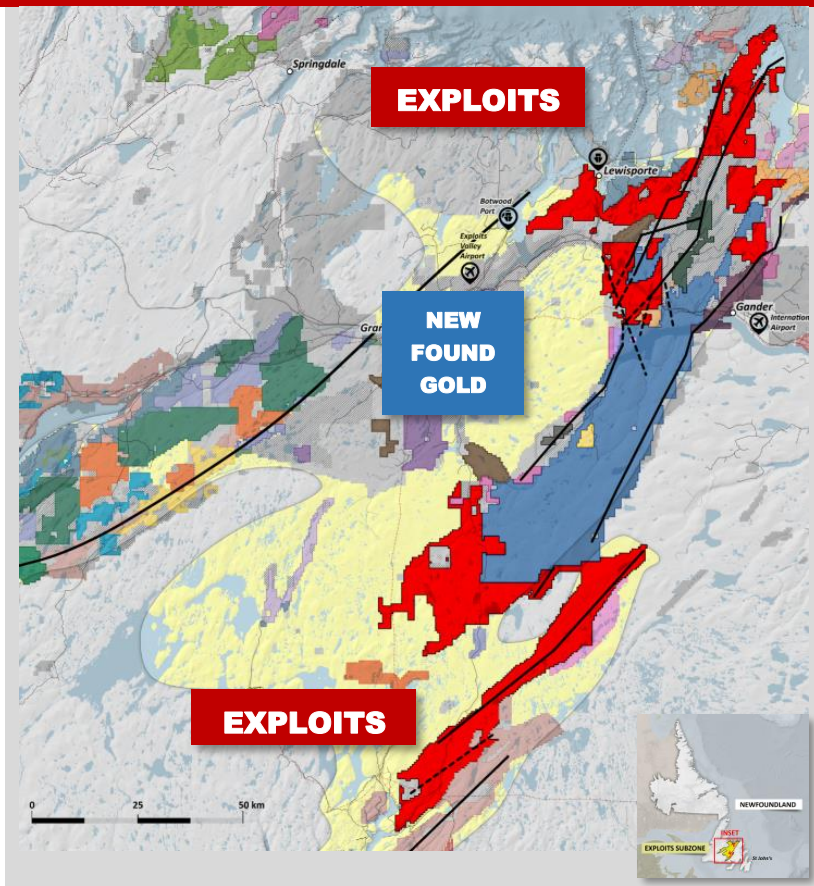
- Visible gold discovered in outcrop, Nov 2020.
- Assays pending.
- Appleton Fault and secondary structures.

### Schooner Prospect (Dog Bay)

- Keats Zone analogue identified by GoldSpot Discoveries Corp. as a fault splay on Appleton parallel features.

### Jonathan's Pond

- Visible gold discovered in outcrop with 29g/t and up to 700g/t in float.



**Strong Management Team** dedicated to exploration across Newfoundland's Exploits Subzone, with extensive experience exploring for epizonal orogenic gold deposits.

Advisory Board with strong track record of discovery in Newfoundland and globally.

**Goldspot Discoveries Corp.** machine learning A.I. will use all our data to prioritize and advance targets for exploration and drilling.

Exploits is the only company so far using **SGH soil** sampling, allowing us to 'see' through the glacial till. Three SGH programs with 4,161 samples to date. *Great Bear Resources used SGH to great success...*

**Geophysics** is being flown in early January (13,500 line kilometers) to complete the data set across our properties. This will allow us to visualize the fault structures which control mineralization.

## DISTRICT SCALE, HIGH GRADE GOLD PROJECTS IN NEWFOUNDLAND



**EXPLOITS**  
DISCOVERY CORP

### Commanding Land Position

- 100% ownership of a 2,111 km<sup>2</sup> land position in the Exploits Subzone.
- 200 km+ strike length of deep-seated regional structures which include the Appleton Fault, Dog Bay Line, GRUB Line, Mt. Peyton Linear.

### Newfoundland is the Ideal Mining Jurisdiction

- Efficient governmental permitting process, easy access to properties, infrastructure, and experienced people.

### Proven Exploration Model

- Exploration model comparable to Kirkland Lake Gold's Fosterville Mine model; high-grade structurally hosted epizonal orogenic gold.
- Proven by New Found Gold's success in discovery at the Keats and Lotto Zones.
- Goldspot Discoveries retained for machine learning data analysis.

### High-Grade Gold

- High-grade gold in outcrop up to 164 g/t Au, float boulders with visible gold up to 700 g/t Au.
- 3 visible gold occurrences and counting...



*Visible Gold from Little Joanna, Nov. 2020*

## SHARE STRUCTURE

66.3M Outstanding	\$1.5M Cash	STRONG SHAREHOLDER GROUP Crest Resources: 23% New Found Gold: 9.9% Newfoundland Prospectors & Investors: 13%	CSE: NFLD FSE: 634-FF
5.3M Warrants	5.3M Options		

### DIRECTORS, OFFICERS

Michael Collins	P.Geo, CEO, Director	604.764.7094
Ian Herbranson	P.Geo, VP Exploration	
Monty Sutton	CFO	604.842.2948
William Sheriff	Director	
Larry Short	Director	
Christopher Huggins	Director	604.968.4844
Rod Husband	Director	

### ADVISORS

David Gower	
David Groves, PhD	
Gary Lewis, CET	
David Patterson	
Nick Rodway, P.Geo	709.682.9123
David Shaw, PhD	
Andrew Lee Smith	

CALL US: 604-681-3170 EMAIL: [investors@exploits.gold](mailto:investors@exploits.gold)

1100 – 595 HOWE ST. VANCOUVER

CSE: NFLD | FSE: 634-FF

[www.exploits.gold](http://www.exploits.gold)