



EXPLOITS
DISCOVERY CORP

SYSTEMATICALLY EXPLORING
HIGH-GRADE GOLD PROSPECTS
IN NEWFOUNDLAND

A District Scale Opportunity

CSE: NFLD
OTCQB: NFLDF
Frankfurt: A2QDKZ

www.exploits.gold

February 2022

CAUTIONARY **NOTES**

Investors are cautioned that, except for statements of historical fact, certain information contained in this document includes “forward-looking information”, with respect to a performance expectation for Exploits Discovery Corp. Such forward-looking statements are based on current expectations, estimates and projections formulated using assumptions believed to be reasonable and involving a number of risks and uncertainties which could cause actual results to differ materially from those anticipated.

Such factors include, without limitation, fluctuations in foreign exchange markets, the price of commodities in both the cash market and futures market, changes in legislation, taxation, controls and regulations of national and local governments and political and economic developments in Canada and other countries where Exploits Discovery Corp. carries-out or may carry-out business in the future, the availability of future business opportunities and the ability to

successfully integrate acquisitions or operational difficulties related to technical activities of mining and reclamation, the speculative nature of exploration and development of mineral deposits located, including risks in obtaining necessary licenses and permits, reducing the quantity or grade of reserves, adverse changes in credit ratings, and the challenge of title.

The Company does not undertake an obligation to update publicly or revise any forward-looking statements or information, whether as a result of new information, future events or otherwise, unless so required by applicable securities laws.

Nick Ryan P.Geo., Project Geologist with Exploits Discovery Corp., is a registered professional geoscientist as defined by National Instrument 43-101. Mr. Ryan has reviewed and approved the technical portion of this corporate presentation.

Why Exploits Discovery: **Highlights**

- **Large land package in a rapidly emerging district (Newfoundland Gold Rush)**
 - ★ **Nine projects with great targets and permitting in place**
 - ★ **Majority of drill results from 2021 program to be reported**
- **Solid support from larger shareholders (Sprott and New Found)**
- **Strong management team and advisory group**
- **Experienced & knowledgeable technical team**
 - > **Strong local team with local knowledge base**
 - > **David Groves - a leading authority on Orogenic gold**
 - > **GoldSpot - proven A.I. and data analysis technology**
- **Systematic and innovative exploration approach**
- **Well funded (\$14M) to execute an aggressive 2022 exploration program**

CAPITAL STRUCTURE

Shares Outstanding	110 million
Warrants	30 million (avg strike \$0.68)
Options	8 million (avg strike \$0.79)
Fully Diluted	148 million
Cash	\$14 million*

Market Cap
\$52M (Jan 12, 2022)

Major Shareholders

 **NEWFOUND**
GOLD CORP ~12%



Eric Sprott: ~20%



*As at January 4, 2022

MANAGEMENT & DIRECTORS



JEFF SWINOGA, President, CEO & Director

Over 25 years of experience in the areas of capital markets, project advancement, development and project construction. Former National Mining and Metals Co Leader at EY Canada. Past President and CEO of First Mining Gold.



MONTY SUTTON, Chief Financial Officer

A former Management Accountant with MacMillan Blodel, he has also worked as a consultant in industry and as an investment advisor, trader, and insurance specialist with PI Financial Corp. in Vancouver.



SHANDA KILBORN, VP, Investor Relations

With over 15 years of experience in the mining sector. She has built her career by providing corporate development, investor relations and corporate affairs services for publicly-traded companies.



WILLIAM M. SHERIFF, Director

With over 30 years in the minerals and securities industries he has been responsible for capital raises in excess of \$300 million. Co founder and Chairman of Energy Metals Corp. which was acquired by Uranium One Corp for \$1.8 Billion.



ROD HUSBAND, Director

A founding partner of Cipher Research, a valuation modeling company, Mr. Husband is a P. GEO and economic geologist with over 30 years of experience in the junior resource sector.



LARRY SHORT, Director

Mr. Short is an award-winning investment advisor and Portfolio Manager with ShortFinancial, Industrial Alliance, a wealth management practice with offices in St. John's and Toronto. He has held VP positions at RBC Dominion Securities and TD Waterhouse.



SIRI C. GENIK, Director

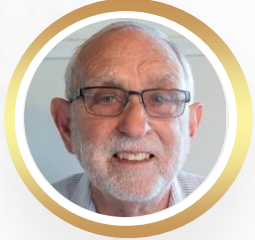
The principal of BRIDGE© she has spent over 25 years working on major capital projects worldwide. Her experience lies primarily in Non-technical Risk Assessments and Strategic Planning, ESG and Sustainability, Stakeholder Relations and External Affairs. She is a Director of PDAC and a Director of Imperial Mining Group.



CHRISTOPHER HUGGINS, Director

Former exploration geologist with Homestake Mining, Over the past 10 years his focus has been on project feasibility, financing and creative capital equipment solutions for mining projects.

EXPERIENCED & KNOWLEDGABLE TECHNICAL TEAM



DAVID I. GROVES, PhD
LEAD ADVISOR

With a Personal Chair at University of Western Australia's prestigious Centre for Global Metallogeny and over a 500 highly cited publications to his credit, **Dr. Groves is a world authority on Orogenic Gold Deposits.**



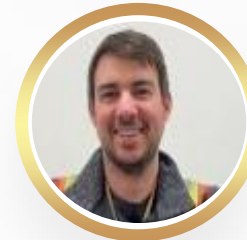
**PROVEN A.I. &
DATA ANALYSIS TEAM**



OUTSTANDING LOCAL TEAM



Led by **Project Geologist Nick Ryan**, Exploits Discovery is extremely proud of the experienced and dedicated team we have on the ground in Newfoundland and Labrador. This team has significant field experience in the Exploits Subzone and is committed and ready to execute on or 2022 program.



NICK RYAN, P. Geo
Project Geologist



NICK RODWAY, P. Geo
Advisor



GARY LEWIS, CET
Advisor

EXPLOITS SUBZONE – World Class Gold Bearing Megastructures

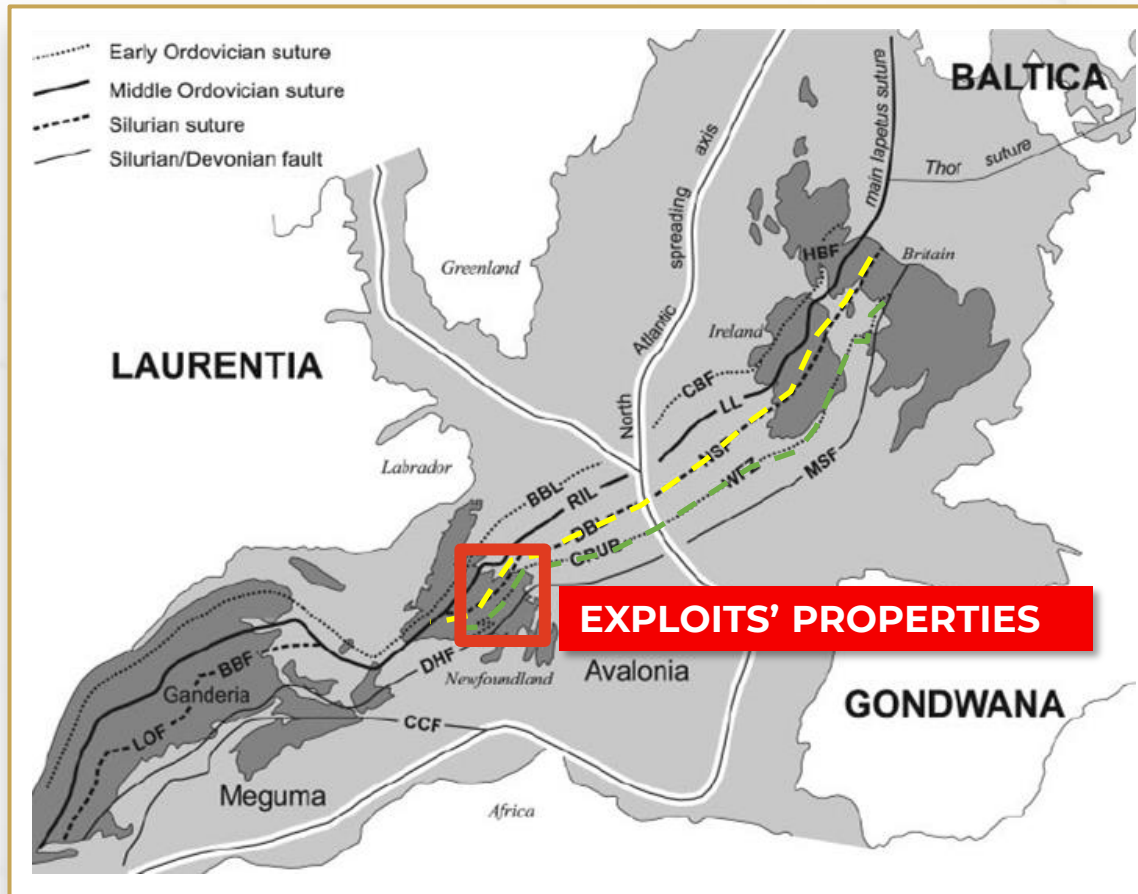
Deep seated faults and fluid conduits form as the Iapetus closes resulting in mega-structures running **from North Carolina to Finland**.

The **Exploits Subzone** is comparable to the **size** of the **Abitibi gold camp** in Quebec and Ontario.

These **Megastructures** are associated with **large scale Orogenic gold deposits** such as Haile (2.8m oz Au M&I, 3.1m oz Au P&P), and Dalradian (3m oz Au M&I, 3.1m oz Au Ind).

Gold deposits form from massive fluid flow of gold enriched fluids and structural discontinuity to **create traps to deposit the gold**.

The **Exploits Subzone** has been identified as having **all the ingredients for major gold discovery** as has been demonstrated **New Found Gold, (Keats Zone discovery)**.

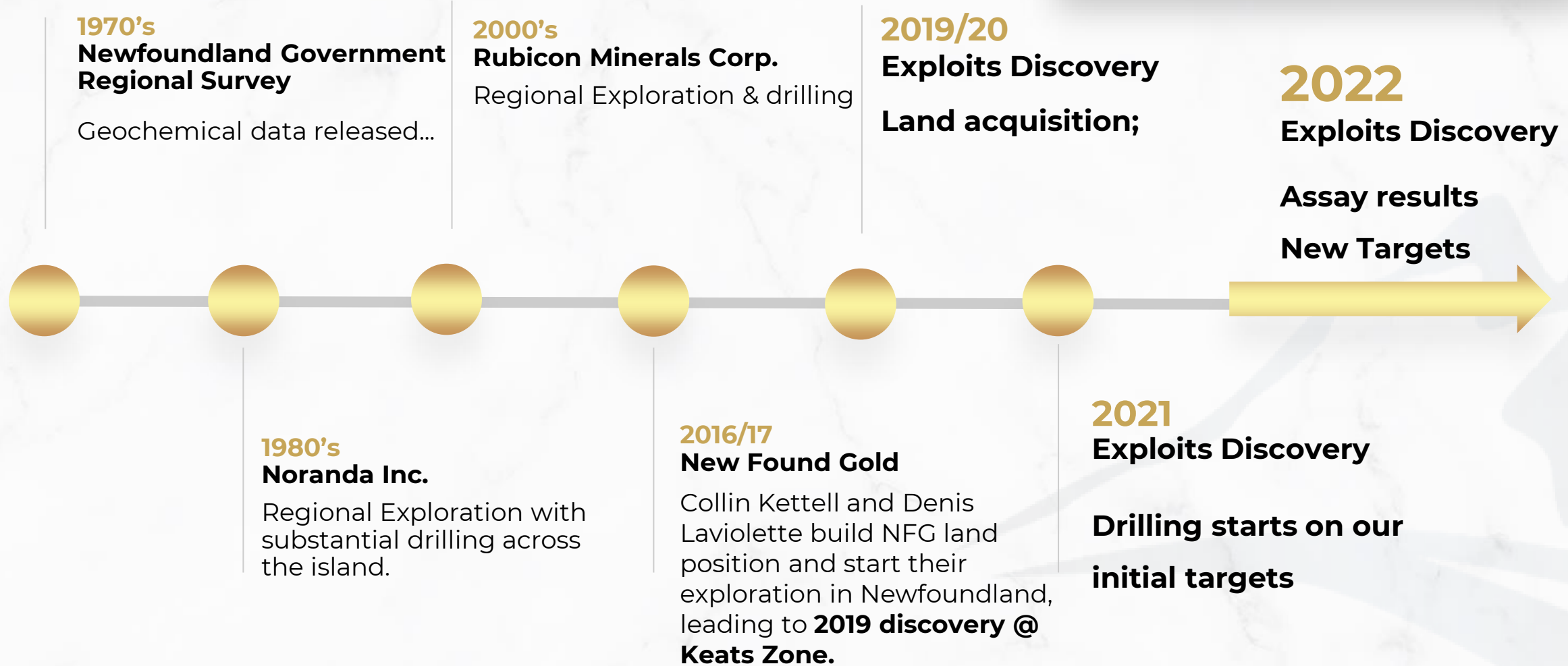


Map showing the position of Iapetus Ocean suture zones. BBL: Baie Verte-Brompton Line; DBL: Dog Bay Line; DHF: Dover-Hermitage Fault; GRUB: Gander River Ultramafic Belt; RIL: Red Indian Line
Source: Pollock et al, 2007.

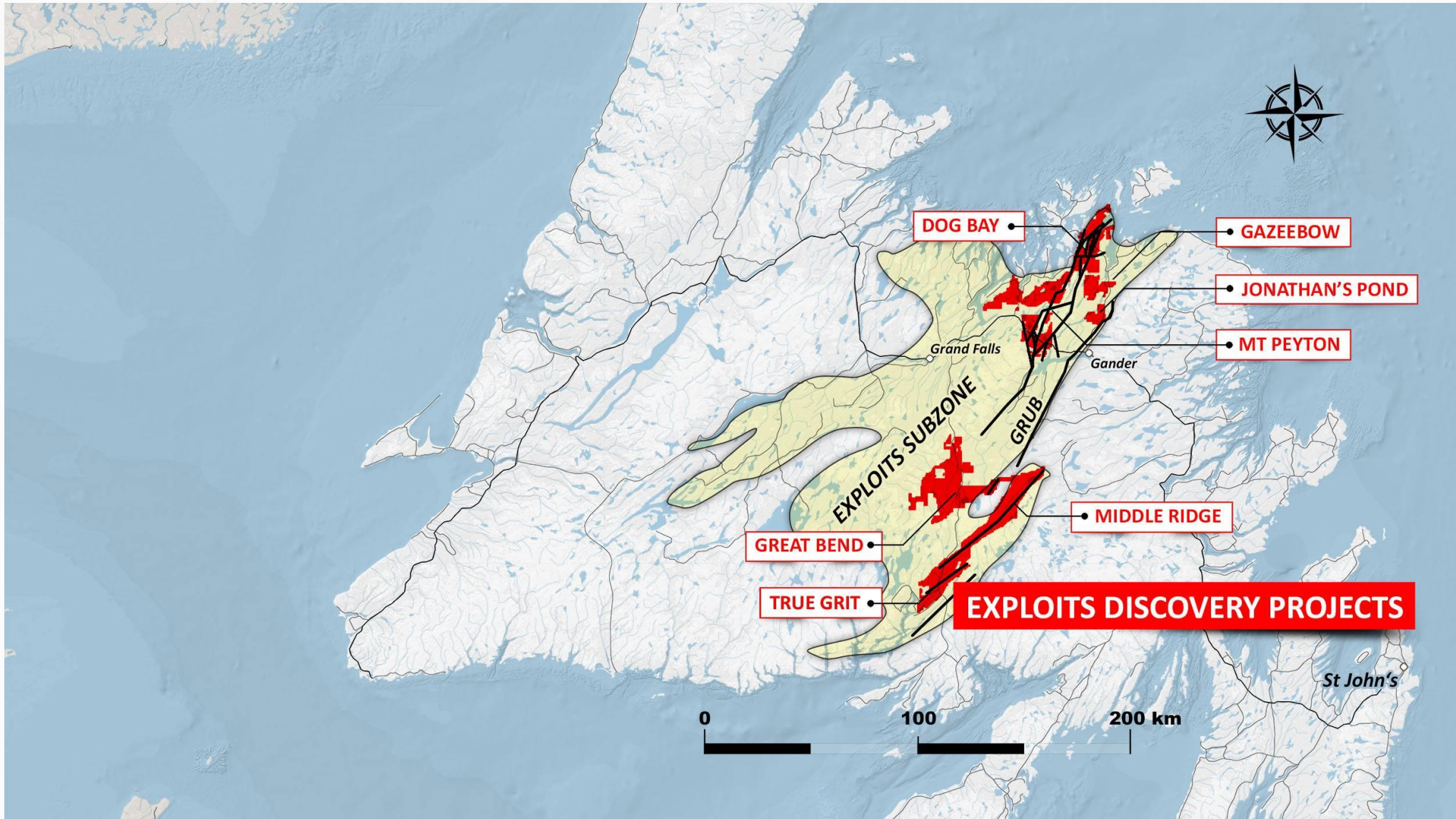


NEWFOUNDLAND'S 21st CENTURY GOLD RUSH

**THIS IS
THE START OF OUR
STORY...**

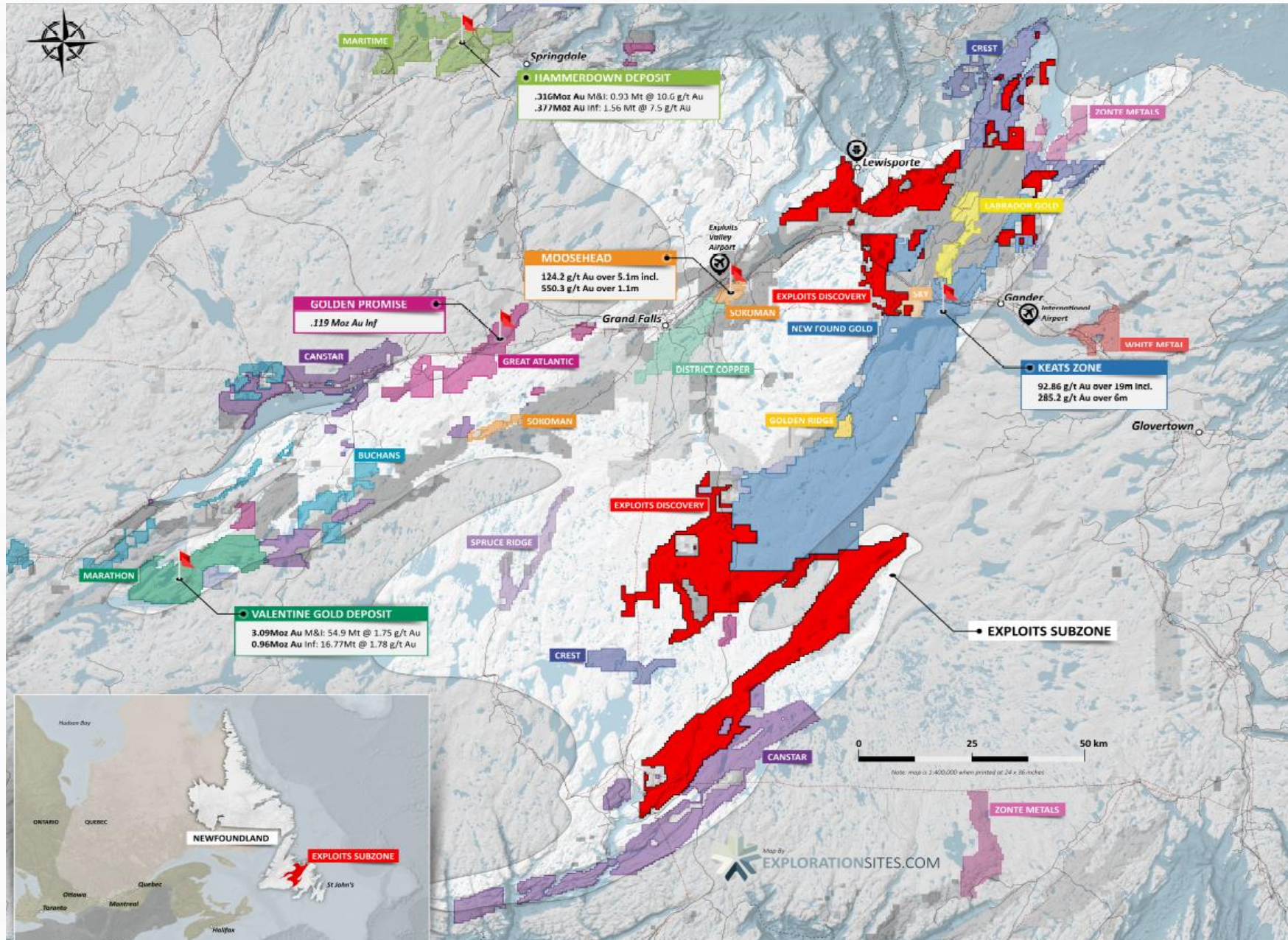


ONE OF THE LARGEST LAND PACKAGES IN THE HEART OF NEWFOUNDLAND'S GOLD CAMP





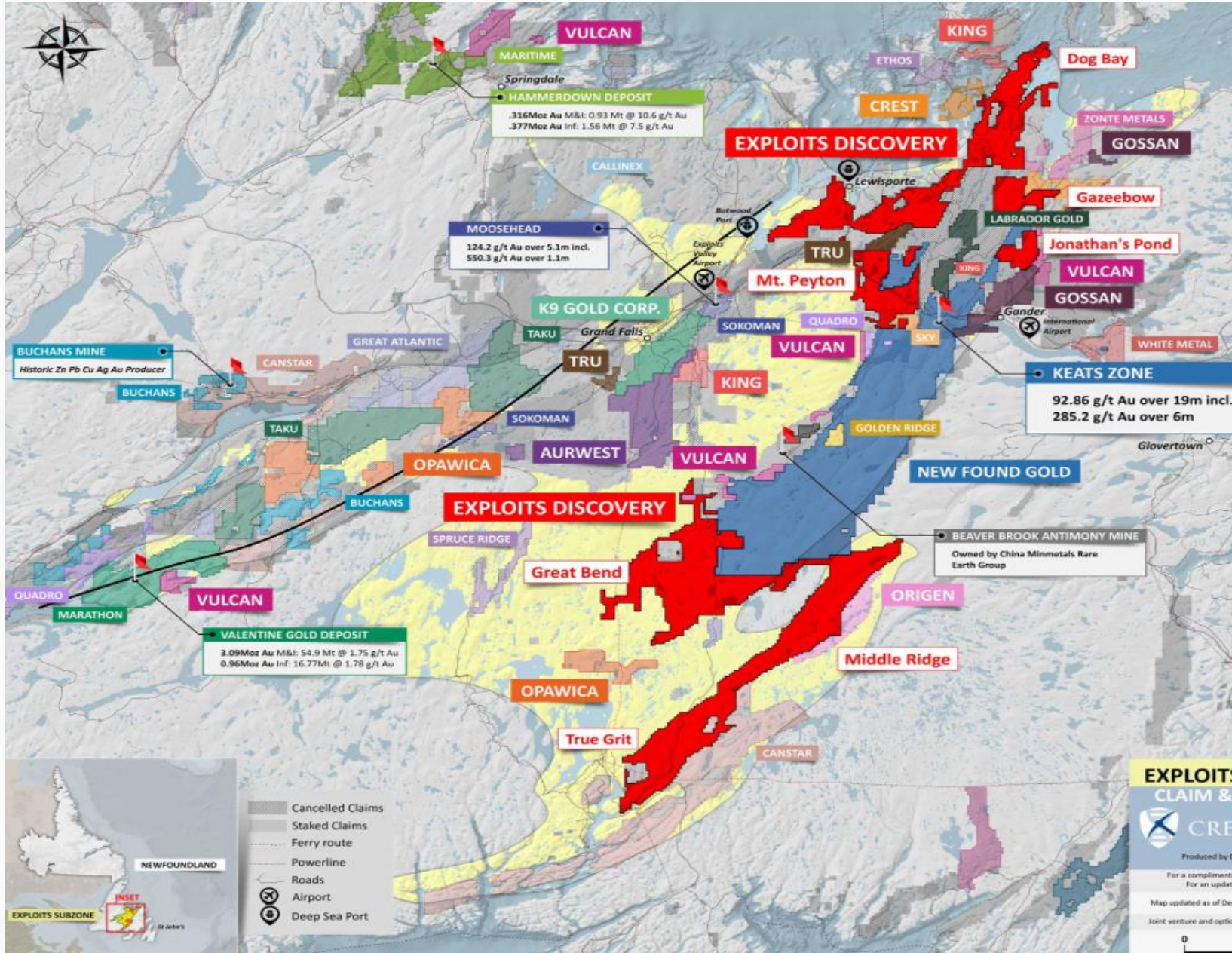
SEPTEMBER 2020: EARLY MOVER ADVANTAGE



■ = New Found Gold
■ = Exploits Discovery

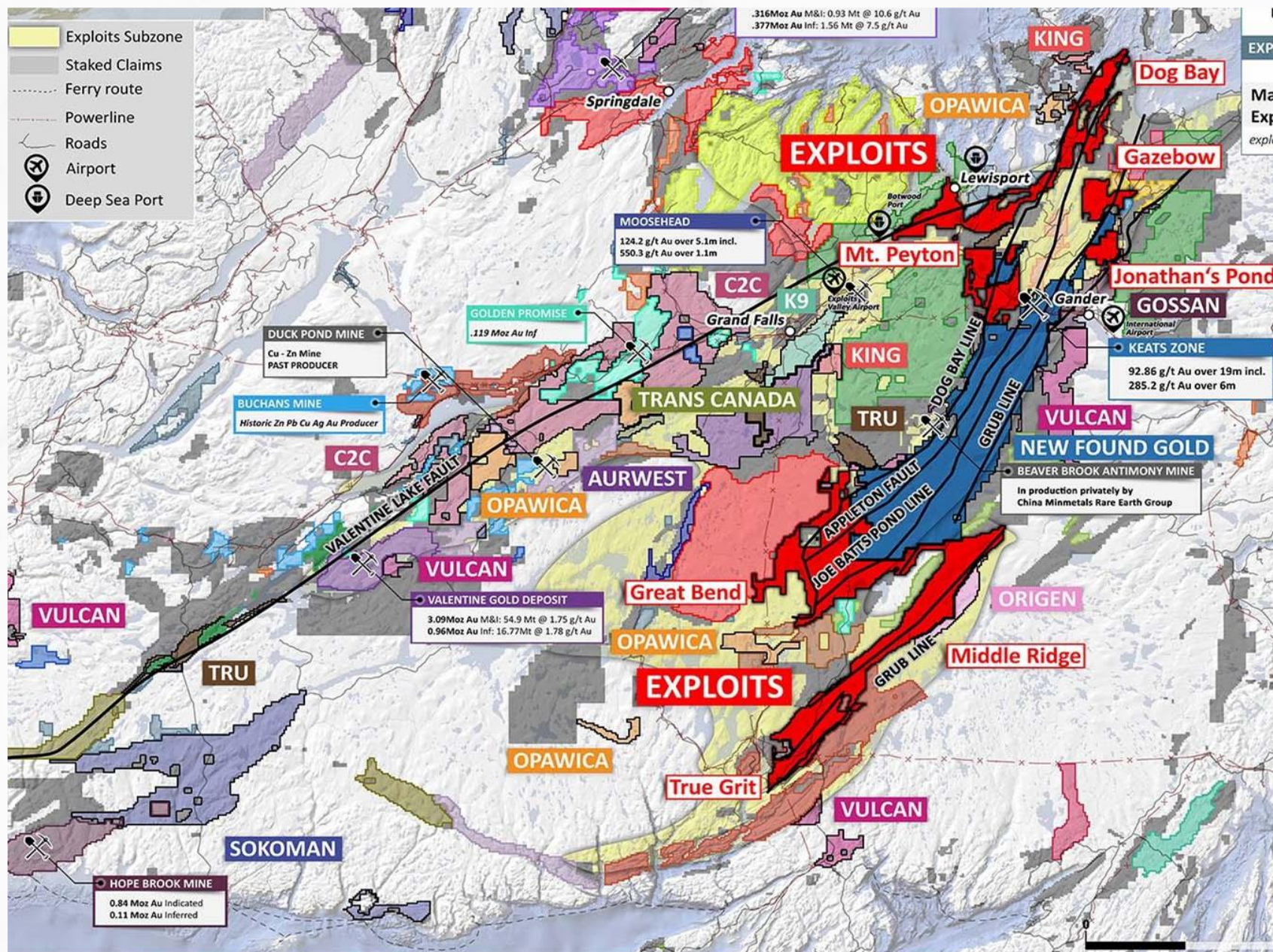


DECEMBER 2020: EARLY MOVER ADVANTAGE





JUNE 2021: EARLY MOVER ADVANTAGE



EXPLOITS DISCOVERY: NEWFOUNDLAND GOLD RUSH

COMMANDING LAND POSITION:

- **100% ownership of a ~2,000+ km² land position in the Exploits Subzone.**
- **~200 km+ strike length of deep-seated regional structures** which include the Appleton Fault, Dog Bay Line, GRUB Line, Schooner Fault, and Mt Peyton Linear.

PROVEN EXPLORATION MODEL:

- Exploration model comparable to Kirkland Lake Gold's Fosterville Mine model; high-grade **structurally hosted epizonal gold.**
- Proven by New Found Gold's success in discovery at their Keats, Lotto, and Knob Zones.

EXPERIENCED AND DYNAMIC TECHNICAL TEAM

- Experienced Local Geologists and Field Crew
- GoldSpot Discoveries Corp. retained for geophysics, machine learning data analysis.
- David Groves (consultant) is a leading expert on orogenic gold

EXPLOITS DISCOVERY: NEWFOUNDLAND GOLD RUSH

SYSTEMATIC EXPLORATION AND DRILLING PROGRAM

- Reinterpretation of existing data in new regional context
- Infill field mapping for better geological control
- New geophysics for better structural control
- Additional prospecting, soil/till sampling, and trenching programs to verify Au anomalies

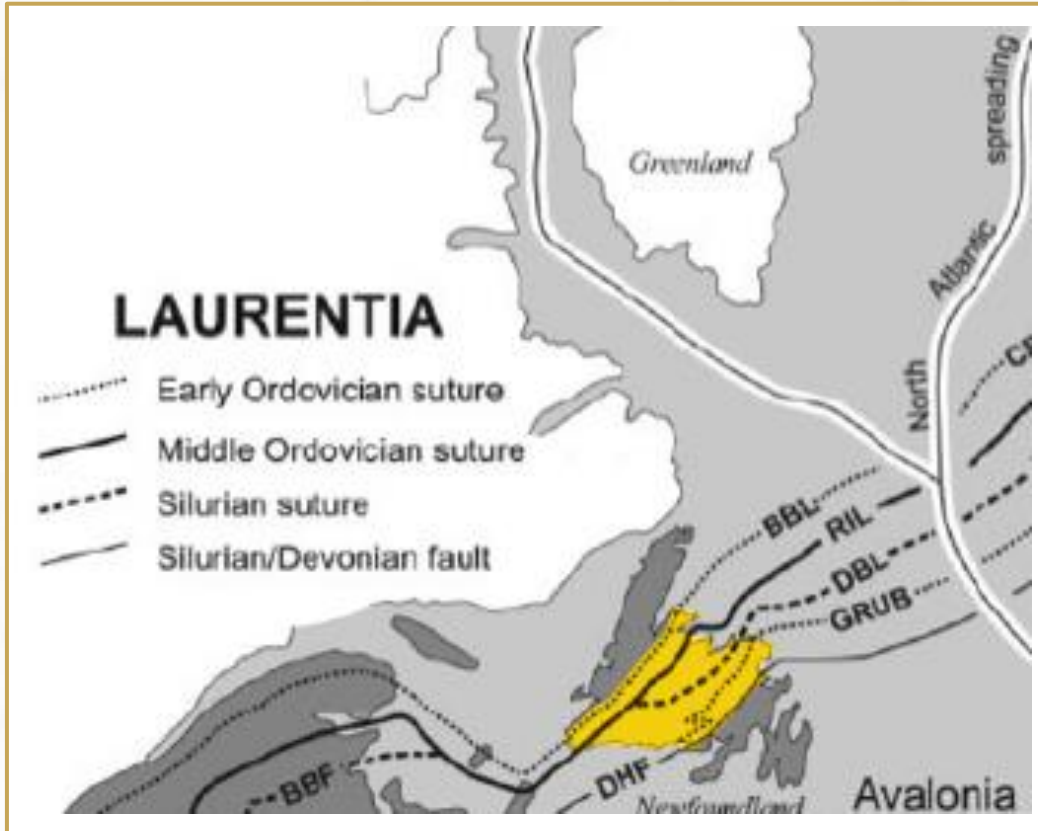
» 5 TARGETS DRILLED » Majority of 2021 Assay Results Expected Early 2022

(Assay results have only been received for 6 of the 58 holes drilled in 2021)

STRONG CASH POSITION AND SUPPORTIVE SHAREHOLDERS:

- Well funded for 2022 Exploration and Drilling Program - \$14M and zero debt
- Good trading volume
- **Expecting a lot of activity and news in 2022!**

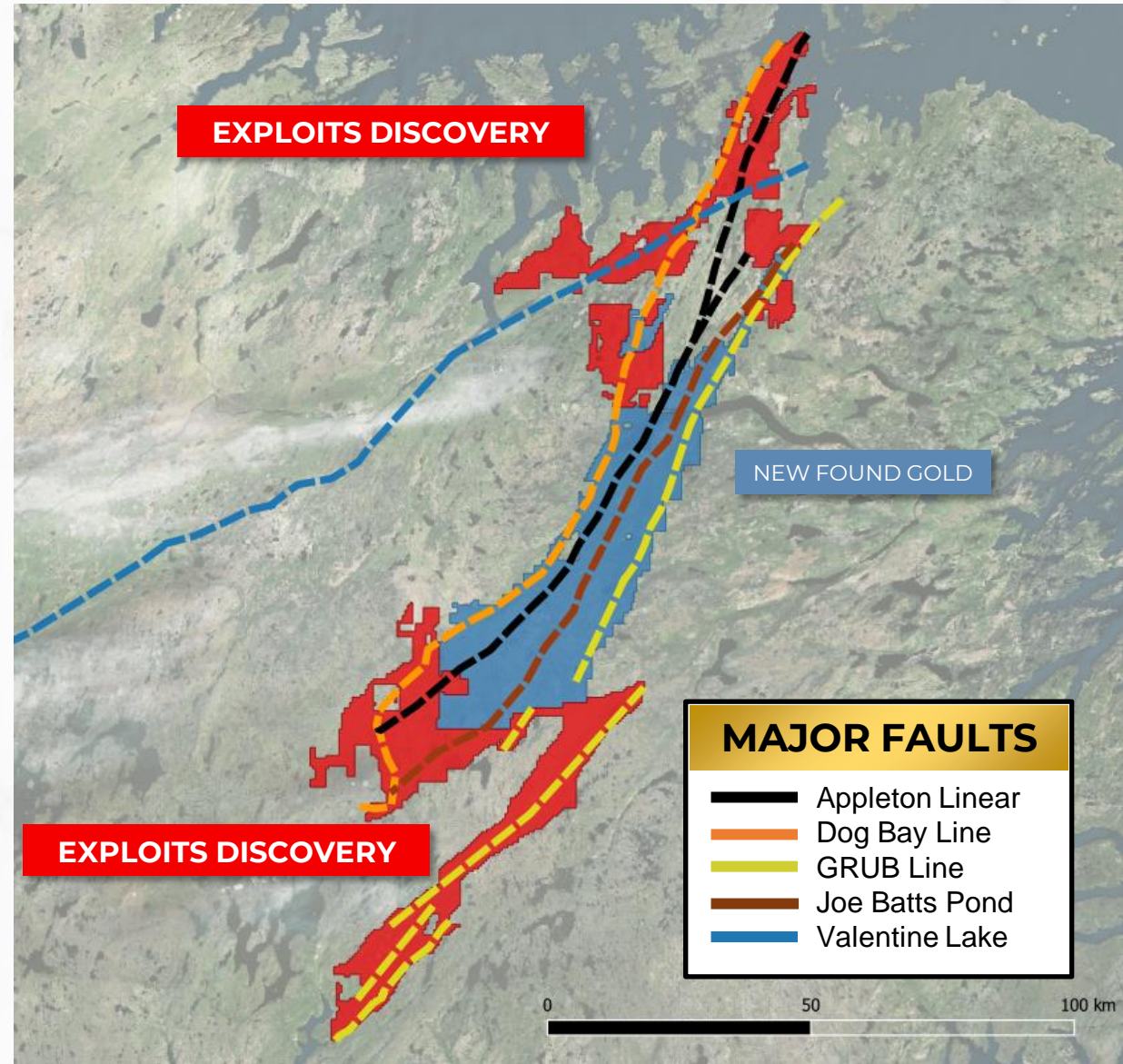
EXPLOITS SUBZONE PRIME FOR DISCOVERY



Map showing the position of Iapetus Ocean suture zones.

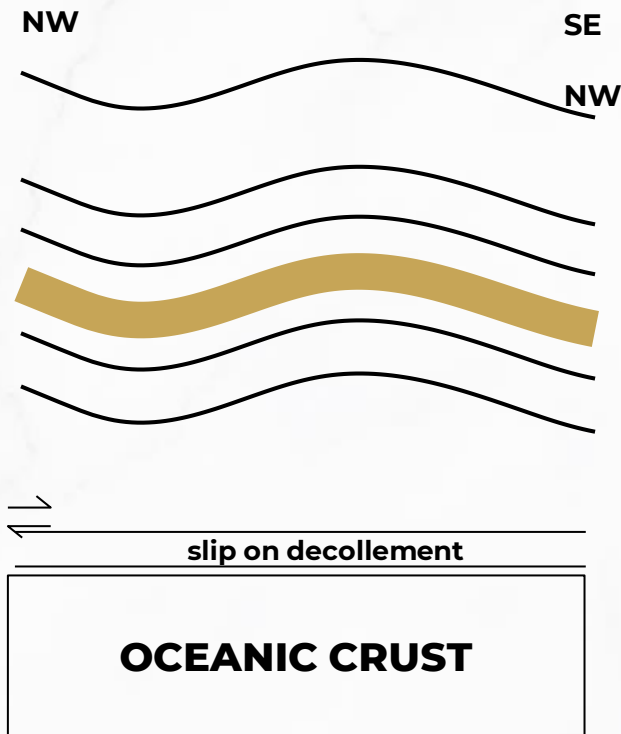
- BBL: Baie Verte-Brompton Line;
- DBL: Dog Bay Line;
- DHF: Dover-Hermitage Fault;
- GRUB: Gander River Ultramafic Belt;
- RIL: Red Indian Line

Source: Pollock et al, 2007.

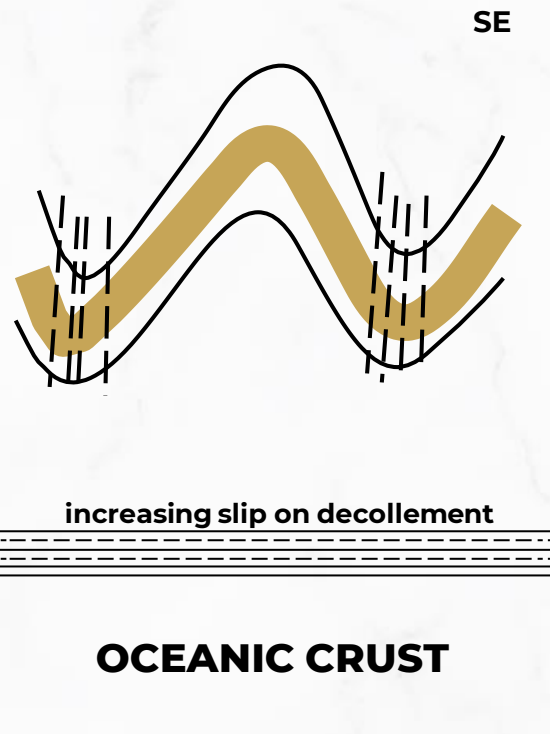


EPIZONAL OROGENIC GOLD MODEL CROSS-SECTION

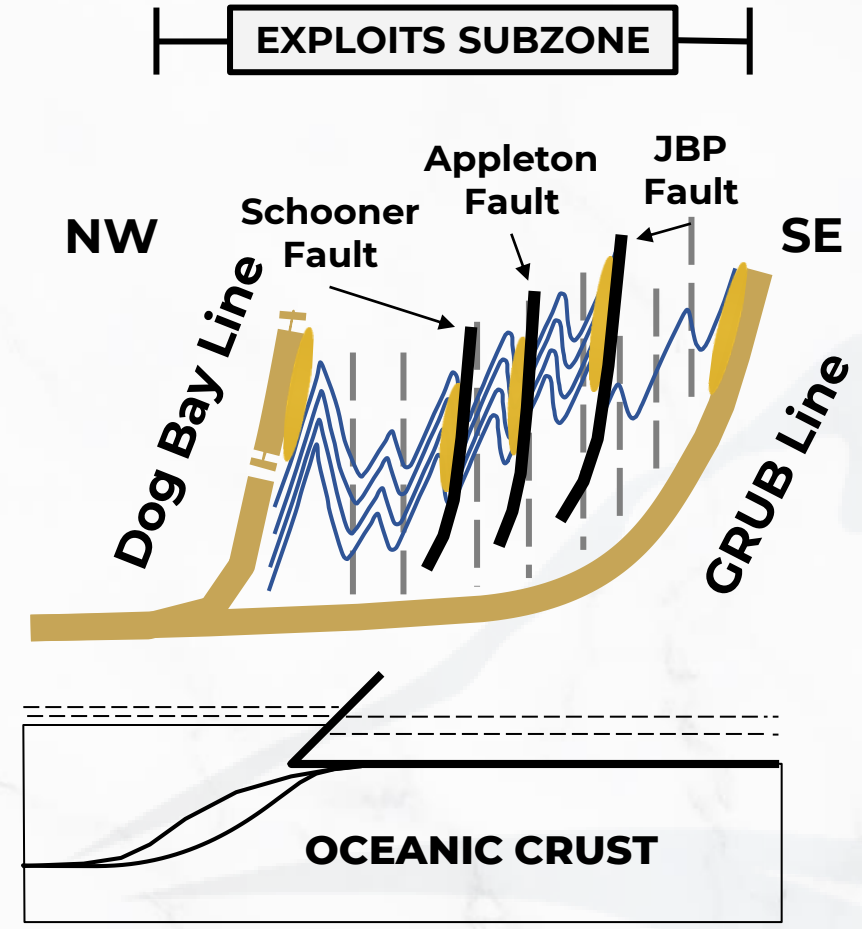
COMPARISON TO FOSTERVILLE SWAN ZONE
VICTORIA, AUSTRALIA



1. Ocean closes, compression of oceanic crust on continental crust begins.



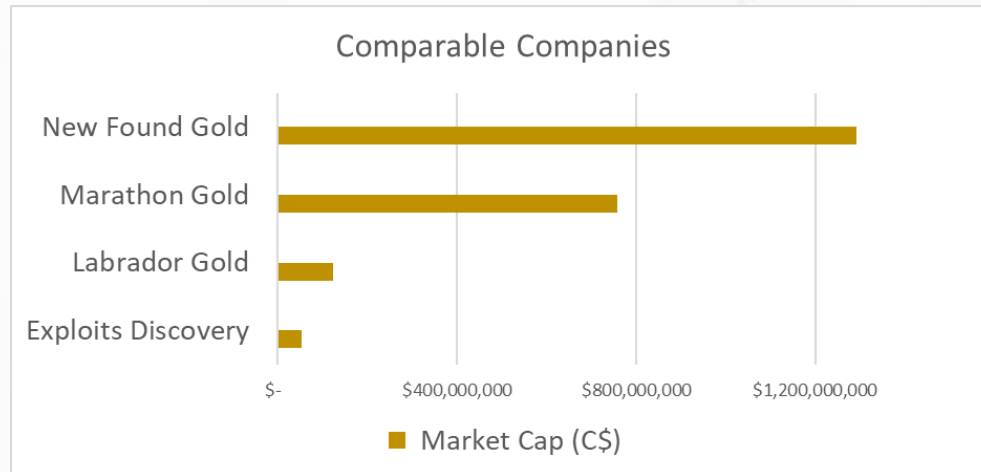
2. Increased compression, pressure, folding & faulting. Metamorphic fluids begin to generate deep in the crust.



3. Fluids promote fault failure (seismic pumping). Auriferous fluids migrate up secondary displacement faults and deposits gold into structural traps (dilatational site).

EPIZONAL, OROGENIC STYLE GOLD COMPARABLES

Exploits Discovery Corp.'s projects have the potential to host Epizonal, Orogenic style gold deposits like other successful discoveries found along major geological structures that continue onto Exploits Discovery ground.



Left, core from the Keats zone, Queensway gold project; right, core from the Eagle zone, Fosterville mine. Comparison of intense quartz stock work with relict black shale fragments from each deposit. Specks of visible gold are present in quartz veins and their selvages. Gray patches contain fine grained antimony sulfides, boulangerite on left and stibnite on right. (New Found Gold Corp, 2020)

As of January 12, 2022



EXPLOITS' EXPLORATION SUMMARY

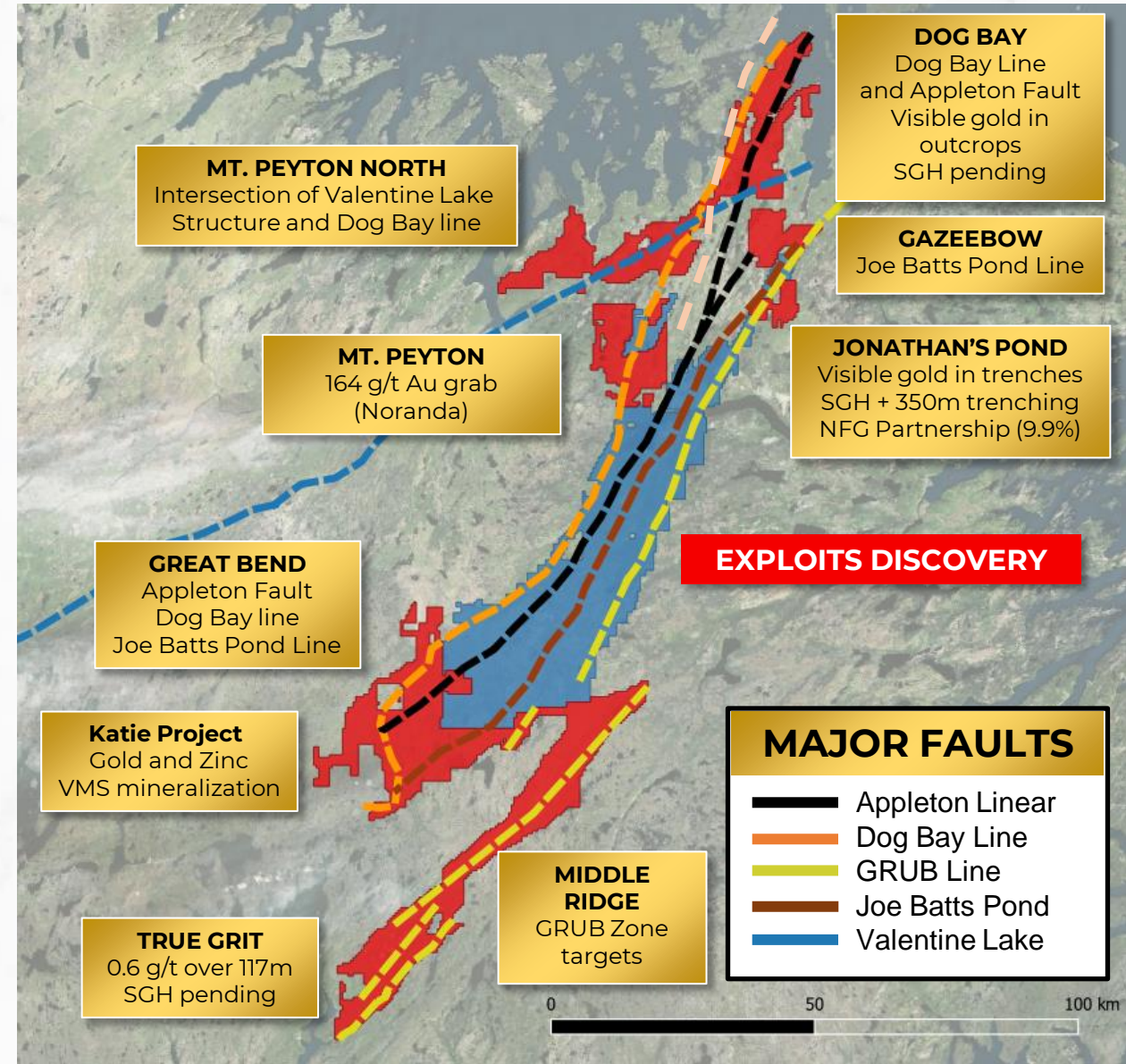
Drill targets defined and permitted. Drilling commenced summer 2021 and majority of assays to be released early 2022.

Geophysics – 20,093 line km were flown, covering ~1,700 km², across our properties.

This allows us to see the fault structures which control mineralization.

Goldspot Discovery Corp's machine learning A.I. will use **all our data to prioritize and advance targets** for exploration and drilling.

Exploits Discovery is one of the few companies so far using **SGH soil** sampling – allowing us to 'see' through the glacial till. Three SGH programs with 4,161 samples to date. *Great Bear Resources used SGH to great success...*

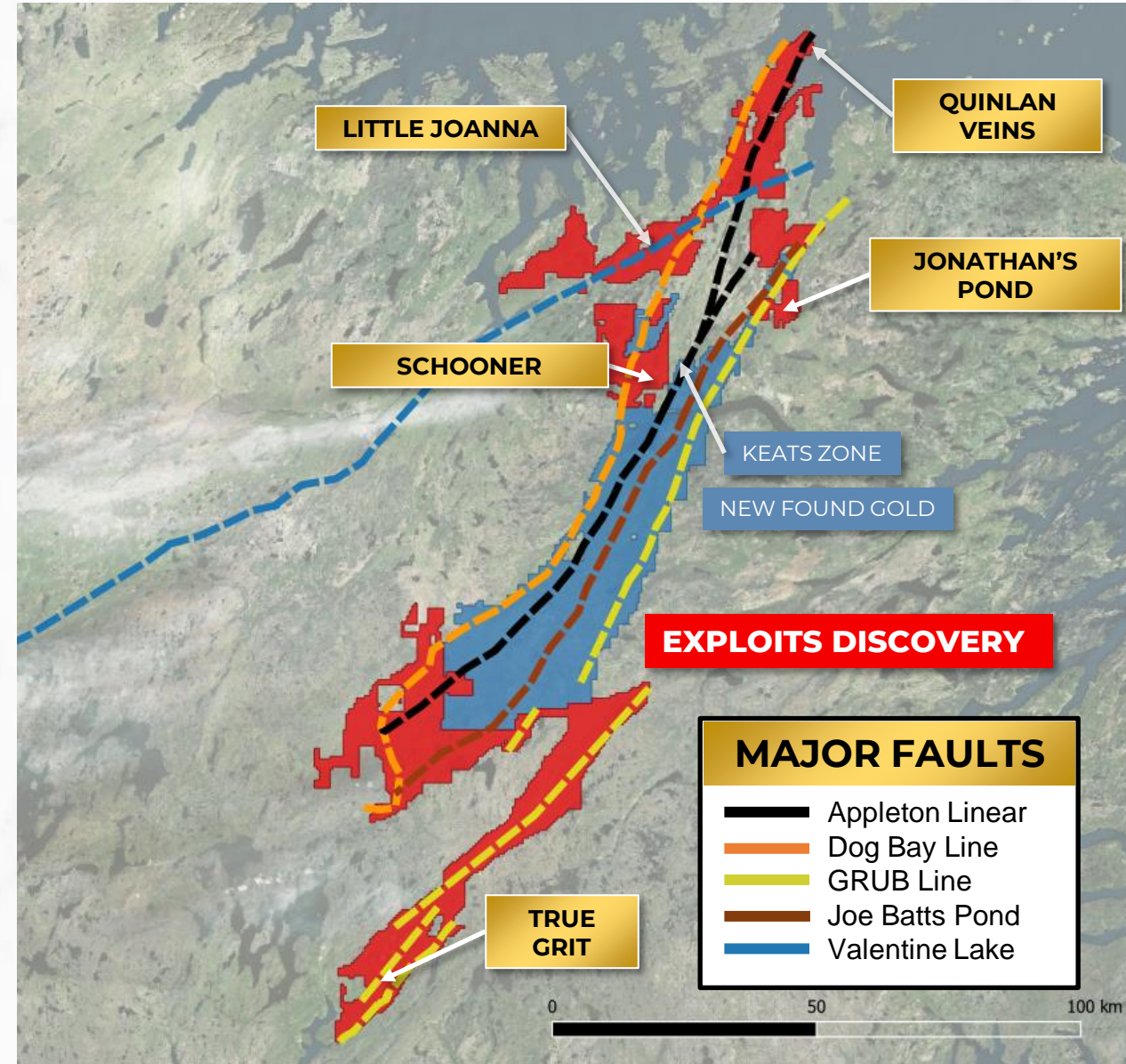


DRILL TARGET 2021 PROGRAM OVERVIEW

Exploits has drill permits for **5 discrete target areas**:

- **Schooner** (Phase 1 & 2 completed)
- **Quinlan Veins** (Phase 1 completed)
- **Jonathan's Pond** (Phase 1 completed)
- **Little Joanna** (Phase 1 completed)

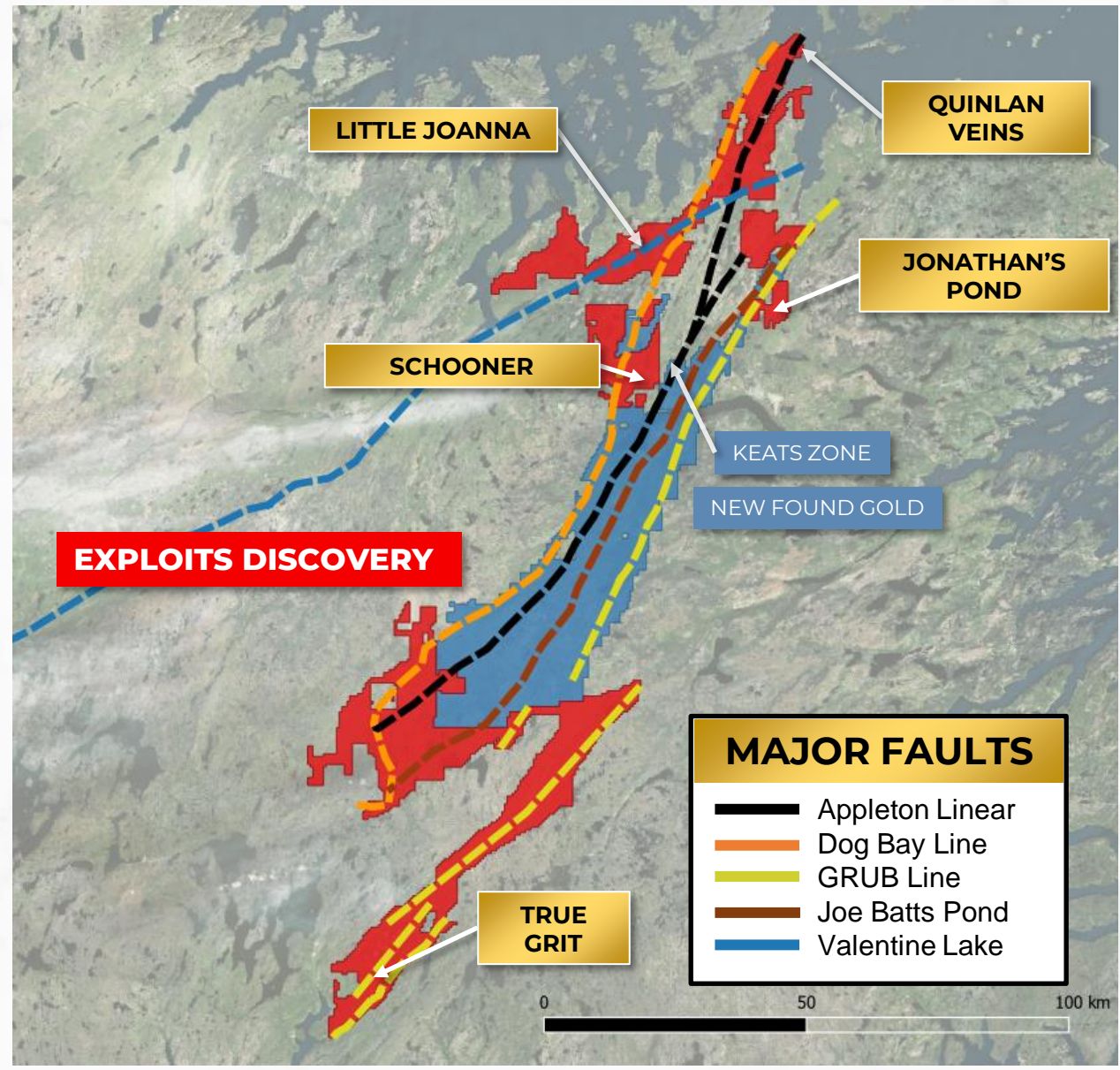
Each area has had significant work completed on select targets. Strong gold occurrences and proximity to primary and secondary fault structures follow the Fosterville epizonal orogenic exploration model.



DRILL TARGET 2021 PROGRAM OVERVIEW

Only 6 of 58 drilled holes reported so far

2021 Drilling Program		
Target	Total Holes	Total Metres
Schooner North	10	3,775
Quinlan Veins	13	2,235
Jonathan's Pond	21	4,471
Schooner South	8	2,098
Little Joanna	6	921
TOTAL	58	13,500



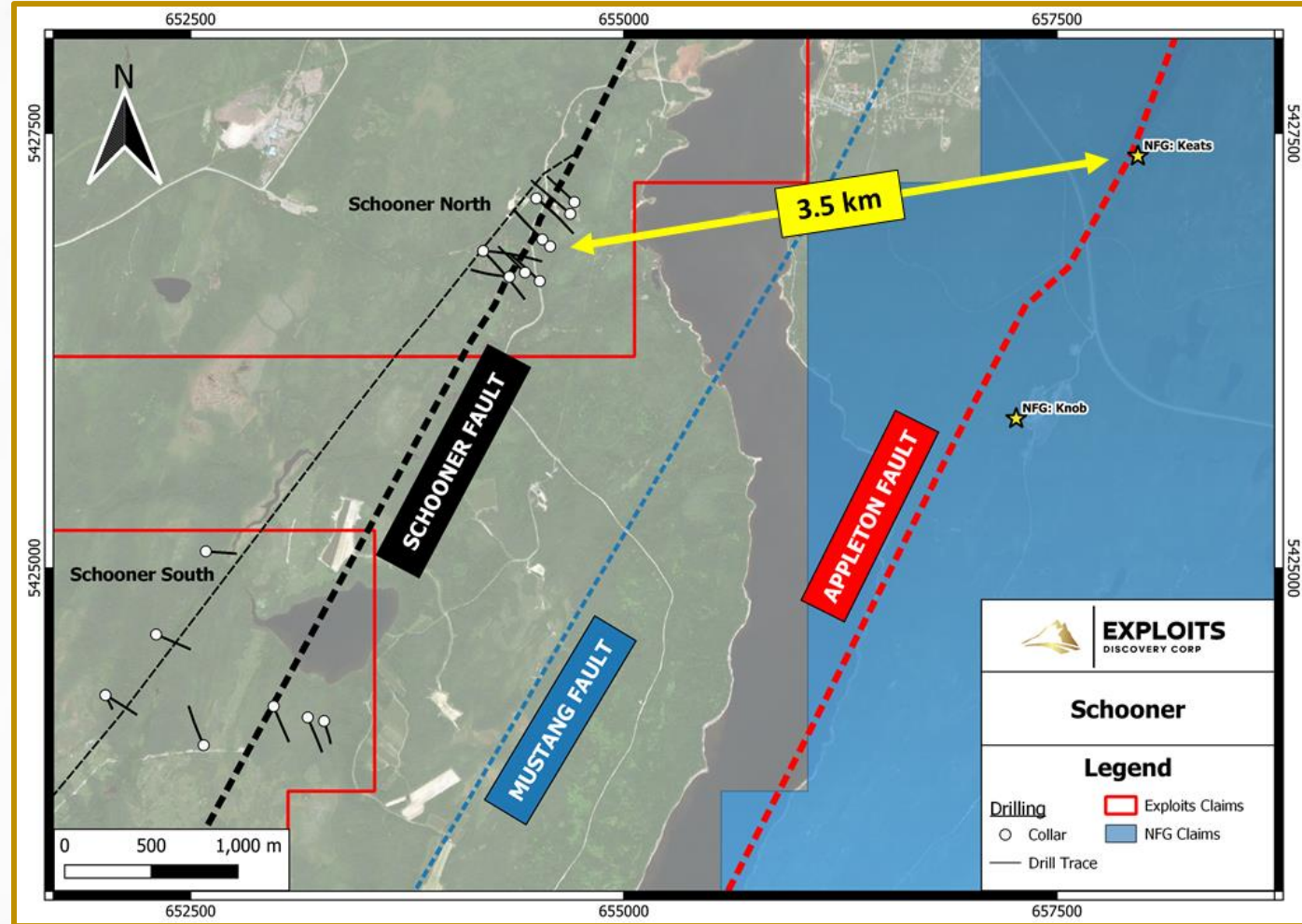
DRILLING ASSAYS PENDING: **SCHOONER NORTH & SOUTH**

The Schooner Fault is a newly identified fault zone uncovered by GoldSpot's geophysical and A.I. analysis on existing data compiled by Exploits.

- **Drill Holes = 18 (North & South)**
- **Total meters drilled = 5,873 m**

Situated just km's west of New Found Gold's (NFG) Keats Zone, the Schooner targets are analogous to NFG's Keats, Lotto, and Knob zones which are identified as a fault splays along Appleton Fault parallel features within the Davidsville Group sediments in the Exploits Subzone.

High priority structural intersection targets have been identified for high resolution ground geophysics, trenching, and drilling.

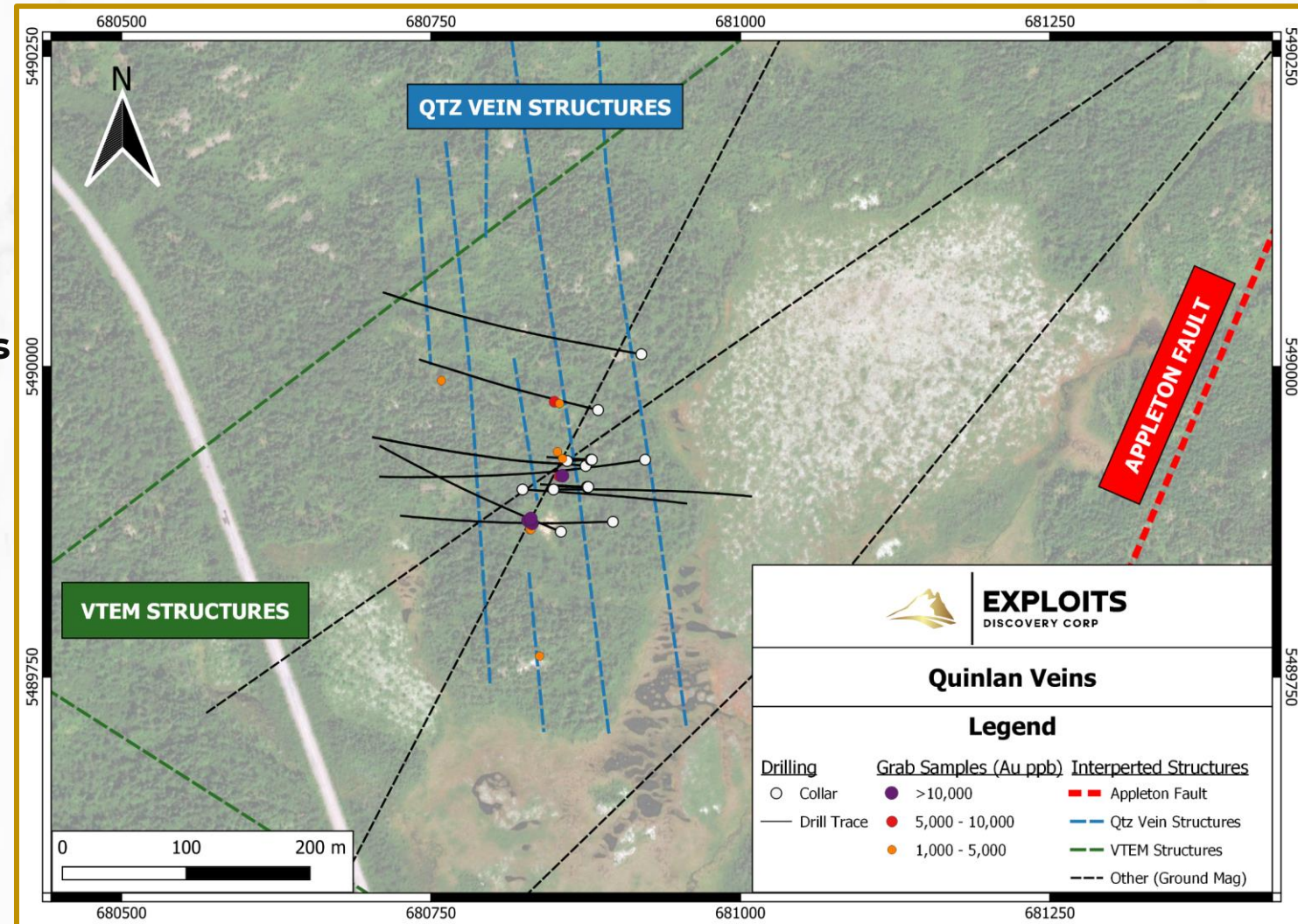


INITIAL RESULTS & ASSAYS PENDING: QUINLAN VEINS

The Quinlan Veins target is located within the Dog Bay Gold Project at the northern extent of the Exploits Subzone. 2021 drilling was planned to test the down dip and strike extension of **multiple 50 to 70 cm wide mineralized outcropping quartz veins** that produced high-grade grab samples (up to **61.3 g/t Au, Feb. 9th release**).

- **Drill Holes = 13**
- **Total meters drilled = 2,235 m**

Received results on 6 of 13 holes, so far with **one notable intersection of 8.69 g/t Au over 0.45 m* at 11 meters downhole** in drill hole QV-21-009.



*The orientation of mineralized veining has not been fully defined and the intersection widths may not represent the true widths of the veins intersected.

DRILLING Completed: JONATHAN'S POND



Property hosts extensive quartz veining with grab samples containing visible gold (margin of 'JP Main Vein') producing up to 28 g/t Au, and float samples up to 700 g/t Au.

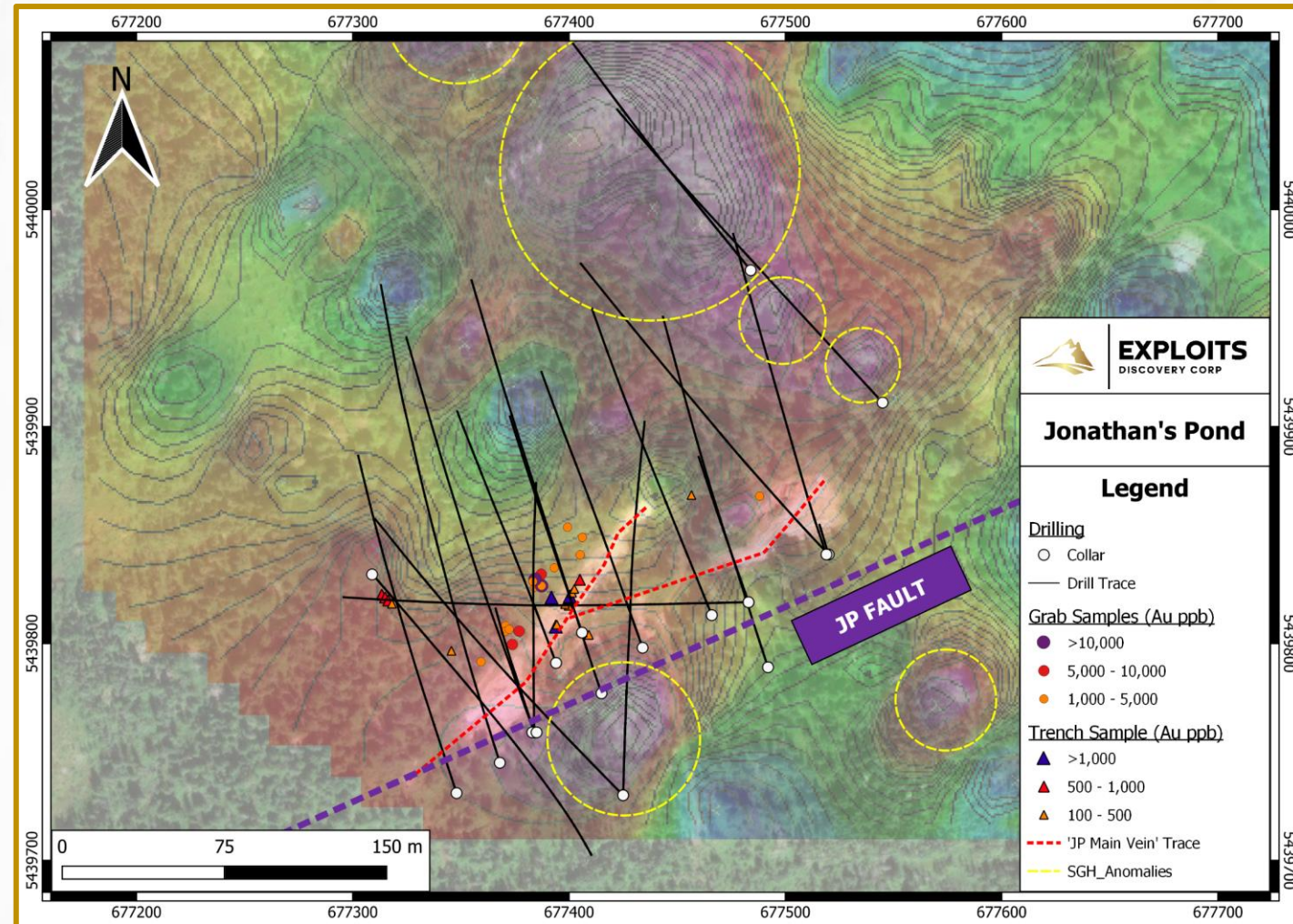
DRILLING Completed: JONATHAN'S POND

The **Jonathan's Pond (JP)** property is bordered by the prospective GRUB Line and Joe Batts Pond (JBP) fault zones and hosts **outcrop with visible gold samples in quartz veining (margin of 'JP Main Vein')** producing up to **28 g/t Au** and float samples up to **700 g/t Au (Paul's Boulder)**.

- **Drill Holes = 21**
- **Total meters drilled = 4,471 m**

SGH soil sampling around the 'JP Main Vein' highlighted an additional **~300 m of strike length** to follow up with trenching and ground geophysics.

~2 km demagnetized fault zone.
Demagnetized fault zones are imperative for orogenic gold deposits as auriferous metamorphic fluids react with magnetite to produce gold.



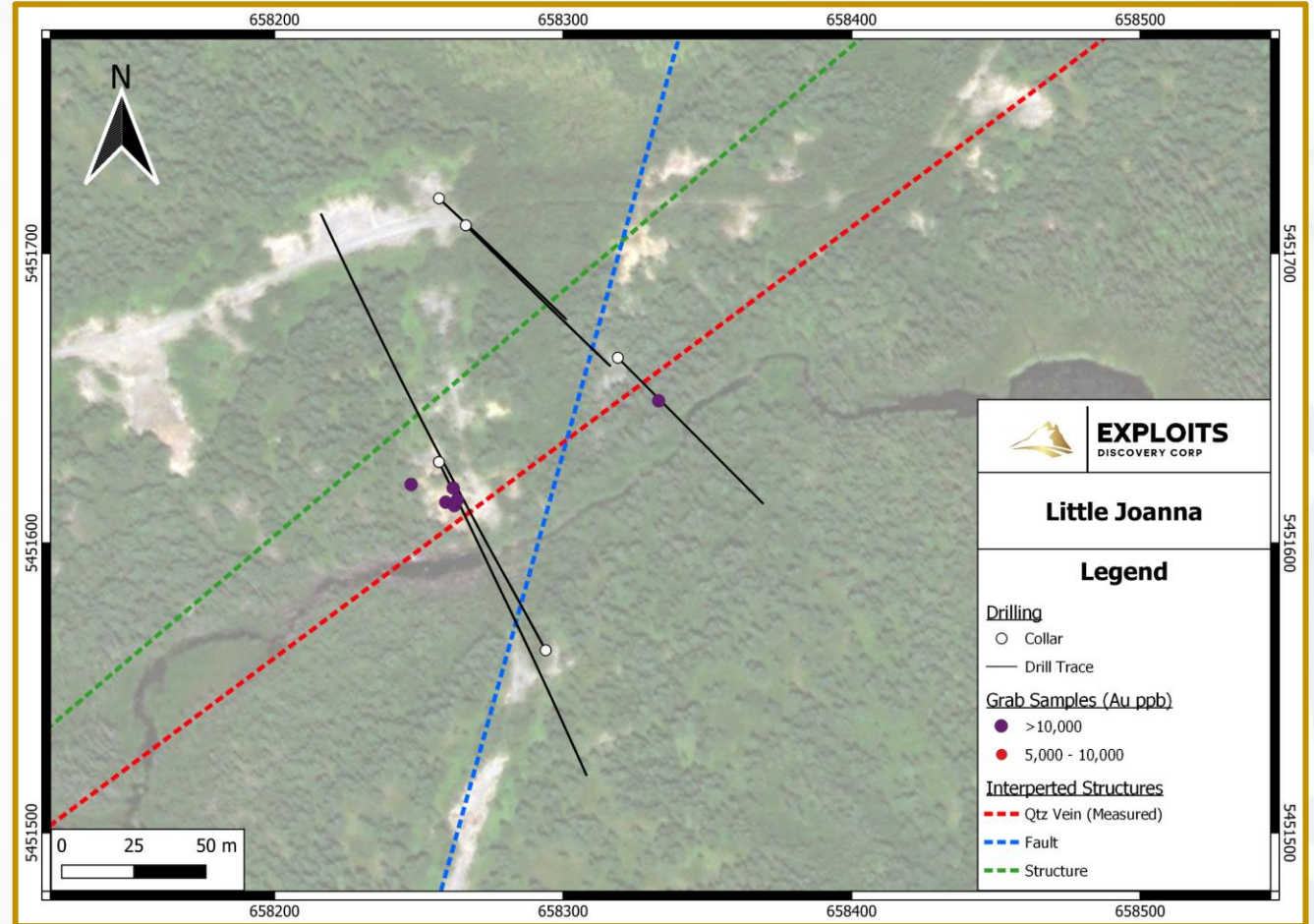
DRILL TARGET: LITTLE JOANNA

Newly discovered Little Joanna Showing with **visible gold observed in outcropping quartz veining**. 5 samples with visible gold returned assays of **194, 133, 123, 119, and 118 g/t Au**. Quartz veining textures display similar appearance to New Found Gold's Keats Zone.

- **Drill Holes = 6**
- **Total meters drilled = 921 m**

The Little Joanna target is situated on an interpreted secondary fault, identified from geophysics by Goldspot Discoveries. The target area is interpreted to be a splay off the Dog Bay Line, providing **~2 km of discovery potential**.

Quartz veins averaging ~30 centimeters in thickness were uncovered along a strike length of ~20 meters before becoming buried under thick overburden.



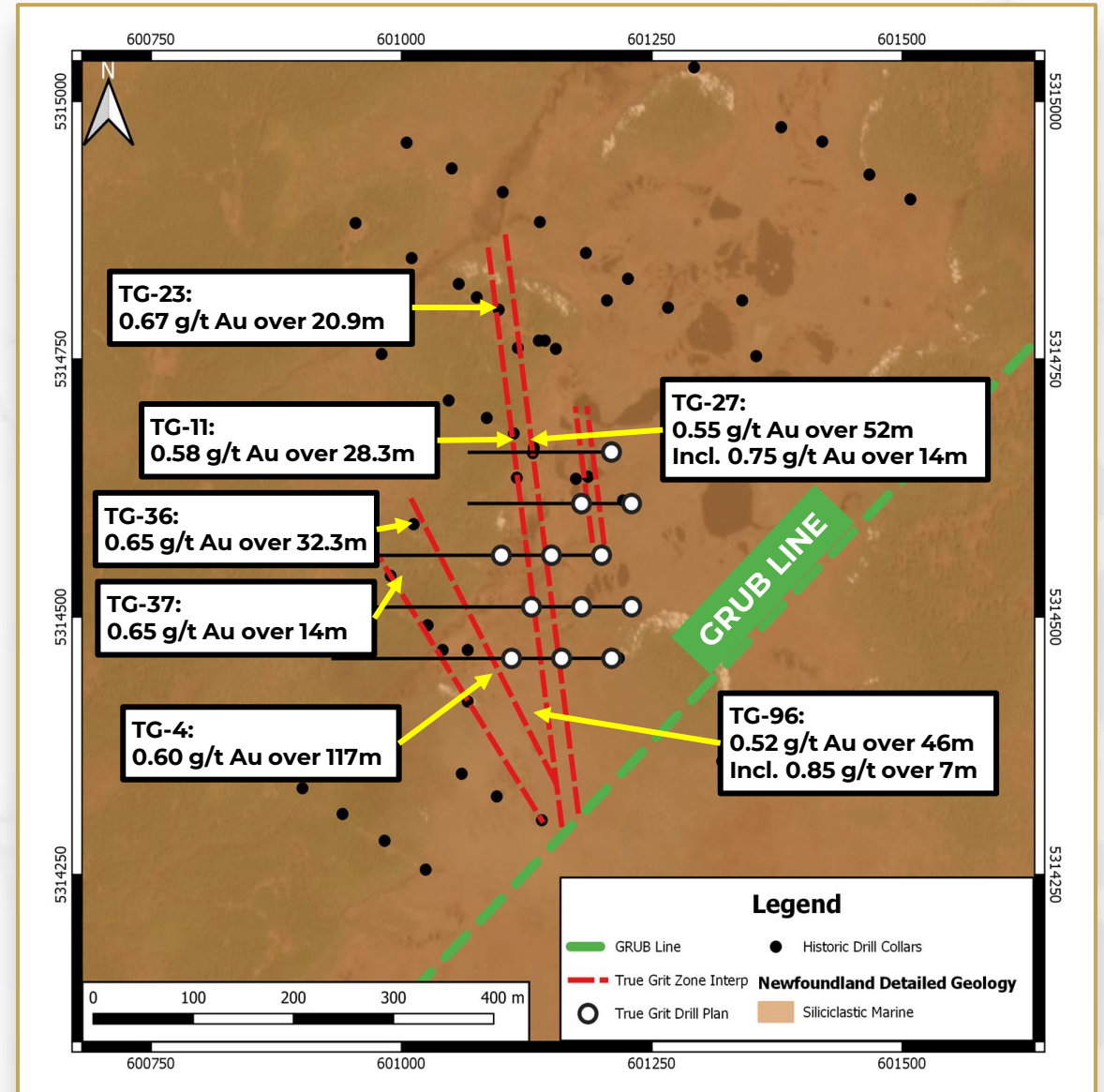
POTENTIAL DRILL TARGET: TRUE GRIT

The True Grit target produced historic **channel samples of 15.6 g/t Au over 1.0 m and grab samples of 30.2 g/t Au (Teck, 1990).**

The property hosts geophysical anomalies coincident with Au-Sb-As soil anomalies which measure over ~2.5 km by ~0.80 km which would be expected in the Fosterville Model.

Near surface, low grade, wide intercepts were drilled by Moydow Mines from 2003-2005, including **0.60 g/t Au over 117 m from surface.** (Moydow, 2003).

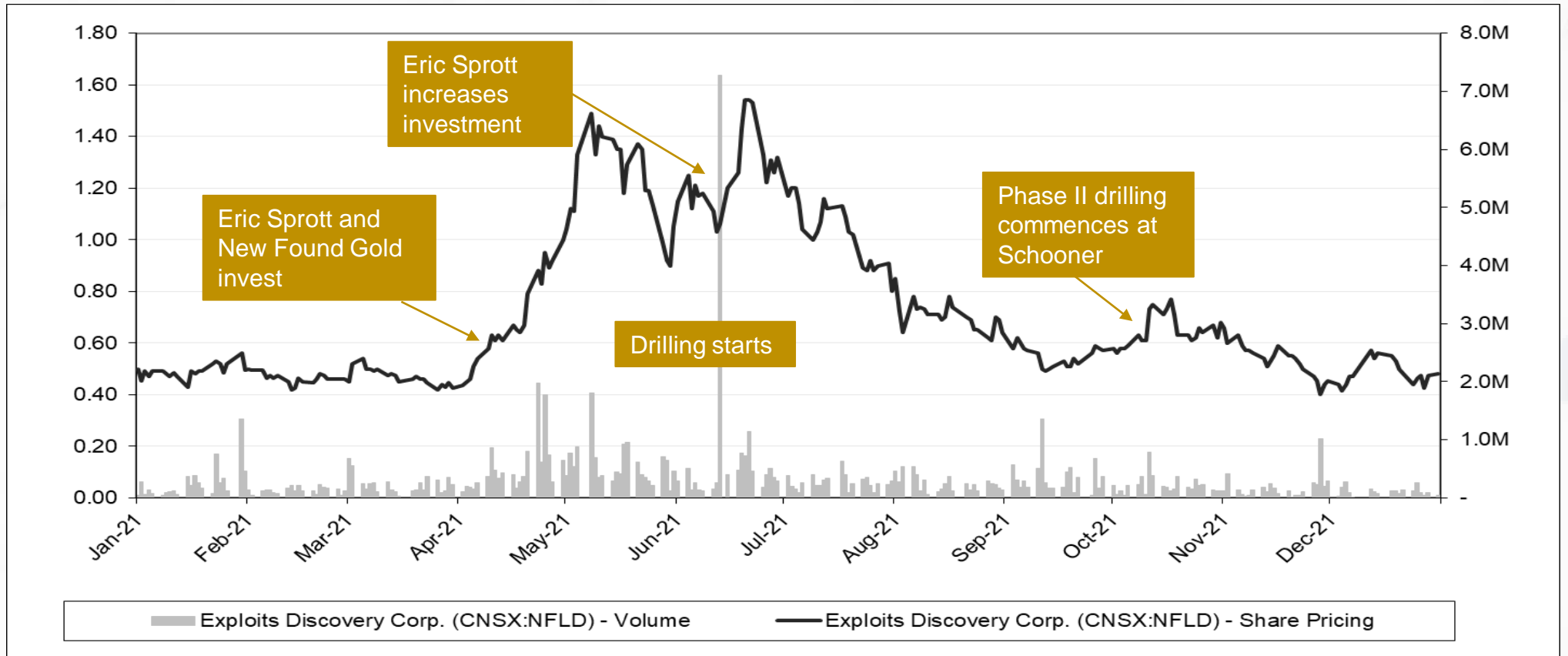
The True Grit property is accessible by the Bay d'Espoir Highway and located in south central Newfoundland.



2022 EXPLORATION PROGRAM

- Reporting the assays results from the remaining 52 holes drilled in 2021 (Schooner North & South, Jonathan's Pond, Little Joanna, and the remaining holes at Quinlan Veins).
- Process and interpreting all results of 2021 program along with historical results and information from recent discoveries in the Exploits sub-zone.
- Continuing to aggressively drill identified targets following the final interpretation of the Company's multi-target 2021 exploration program as well as new targets generated in 2022.
- Executing field programs including infill geophysics, as well as soil and till sampling, in under explored areas along known regional deep-seated structures such as the Appleton Fault, GRUB Line, and Dog Bay Line.
- Geophysical interpretation with Goldspot Discoveries of Exploits' 20,093 line-km geophysical survey, covering approximately 1,767 km², of the True Gritt, Dog Bay, Mt. Peyton, Middle Ridge, Johnathan's Pond, Great Bend, and Gazeebow Interpretation of the geophysical data will include cleaning/processing of data as well as structural/lithological interpretation allowing us to see the fault structures which control mineralization.
- Working with our industry partners to find solutions to resolve unacceptably long laboratory turnaround times for assay results.

OVERVIEW & NEAR-TERM CATALYSTS



- Release remaining assay results from the 2021 exploration program
- Assessing new targets (ongoing)
- Resume aggressive drill program (2022 exploration program is fully funded)

RECAP: SUMMARY

- ✓ **Large land package in a rapidly emerging district**
- ✓ **Solid support from larger shareholders (Sprott and New Found Gold)**
- ✓ **Strong management team and board**
- ✓ **Experienced and knowledgeable technical team**
 - > **strong local team and knowledge base**
 - > **David Groves - a leading authority on Orogenic gold**
 - > **GoldSpot - proven A.I. and data analysis technology**
- ✓ **Systematic and innovative exploration approach**
- ✓ **Nine projects with great targets and permitting in place**
- ✓ **Majority of drill results from 2021 program to be reported**
- ✓ **Well funded (\$14M) to execute an aggressive 2022 exploration program**



EXPLOITS
DISCOVERY CORP

CONTACT

Jeff Swinoga, President & CEO
Exploits Discovery Corp.
+1 (416) 816-0424
investors@exploits.gold

CSE: NFLD
OTCQB: NFLDF
Frankfurt: A2QDKZ

www.exploits.gold

February 2022